

NPS Fund Management Center

Location Manseong-dong 1-5, Deokjin-gu, Jeonju-si, Jeollabuk-do, Korea

Function Office, Dormitory

Site area 18,700m²

Bldg. area 3,482m²

Total floor area 19,030m²

Stories B1, 8FL

Structure Reinforced concrete

Finish Stone panel, High efficiency Low-E glass, Aluminium panel

Design HAEAHN Architecture

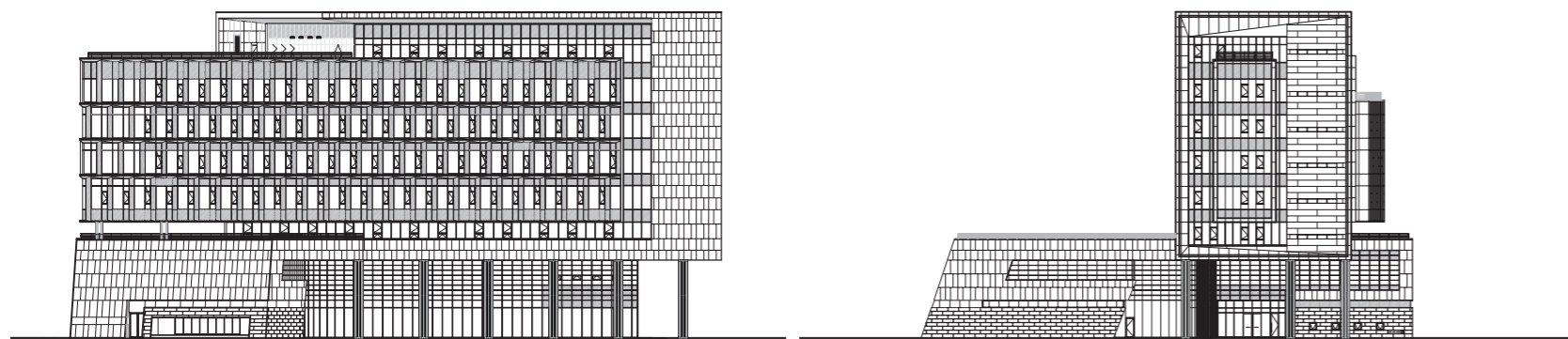
Photographer Agency L2 / Namsun Lee

The vision of the new NPS Fund Management Center is to integrate with the NPS headquarters, transferred to Jeonju Innovative city earlier, and to envision trustful and bright future of the National Pension. With a design concept, 'National Tree(國松): People's Pine Tree', we proposed an architecture of four different design keywords(trust, growth, symbiosis, and integration) based on the National Pension Service's core value TOP+(trust, communication, passion, happiness).

The first design keyword is 'Trust' to stand for transparent management of NPS fund. Office facility is created in a form of a transparent box, which realizes the image of cutting-edge openness and achieves the creative vista in harmony with the NPS headquarters. The second design keyword is 'Growth' to reinforce trustful image of NPS Fund Management Center as the keeper of people's valuable assets. A solid frame inspired

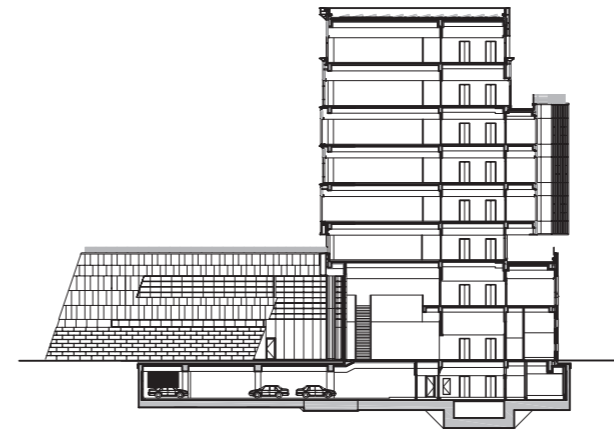
by Jeonju Fortress Wall wraps up the transparent mass and creates a continuous flow, which symbolizes stability and growth. The third design keyword is 'Symbiosis' to represent customized community spaces where members can communicate effectively in harmony with surrounding nature. Refreshing community spaces located in various places are devised to promote creativity and innovation in the workplace. The fourth design keyword is 'Integration' as the master plan for two separate blocks(NPS and NPS Fund Management Center) to achieve global vision of National Pension Service. Arrangement of facilities, circulation and space configuration were carefully planned so that buildings and outdoor spaces can make a solid correlation with one another. Harmonious landscape plan is employed to represent the future-oriented aspiration of NPS management Center to take off in the world.



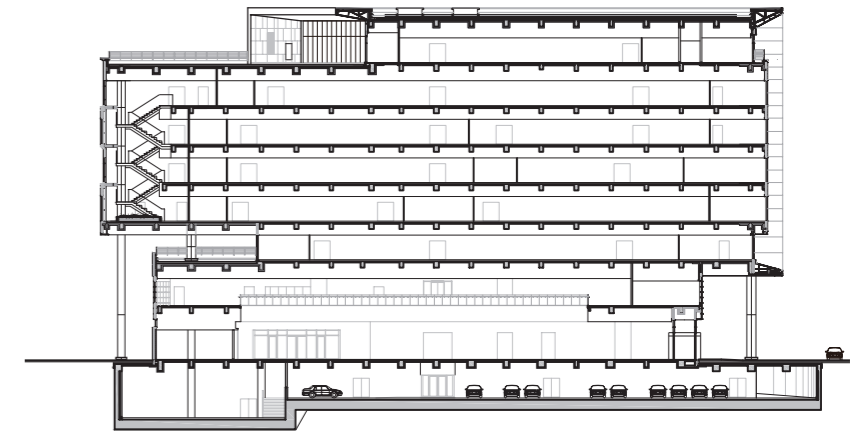


South elevation

East elevation

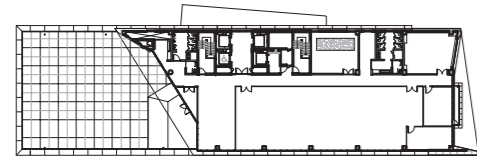


Longitudinal section

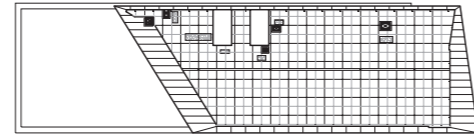


Cross section

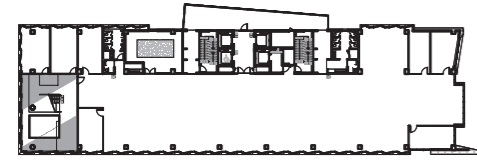
0 5 10 20 40m



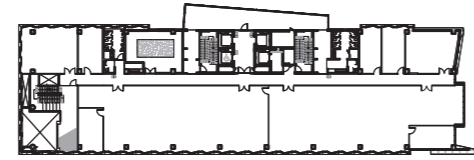
Eighth floor plan



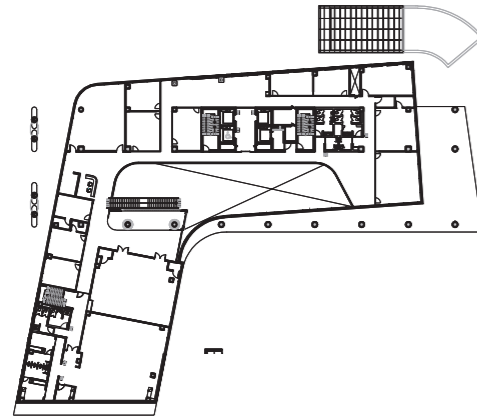
Roof floor plan



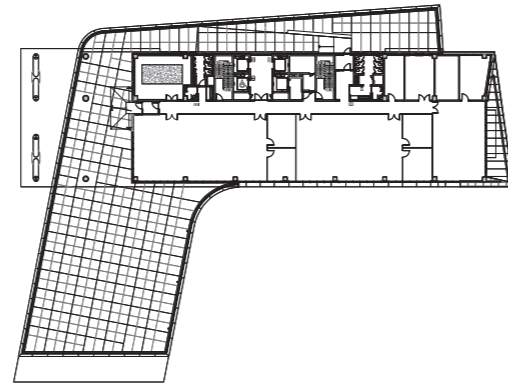
Fourth floor plan



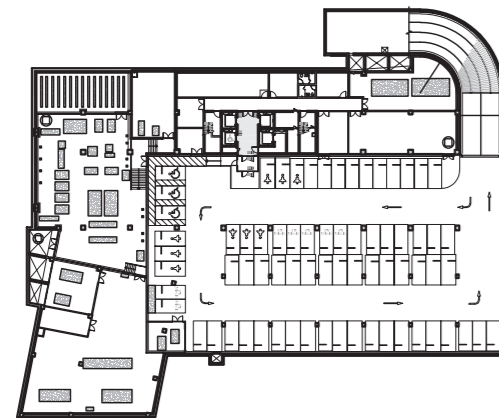
Fifth floor plan



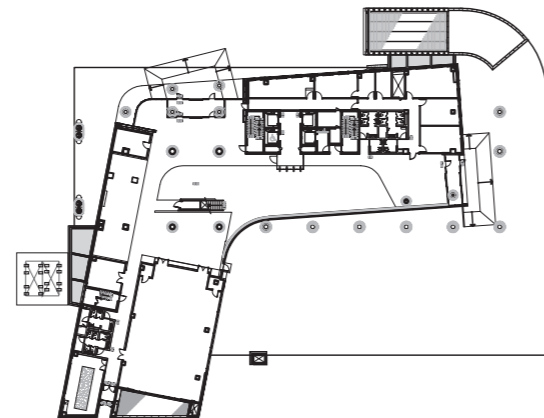
Second floor plan



Third floor plan



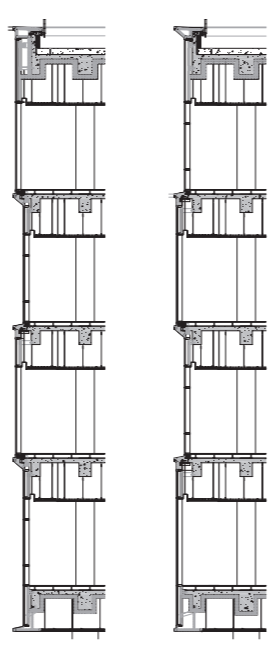
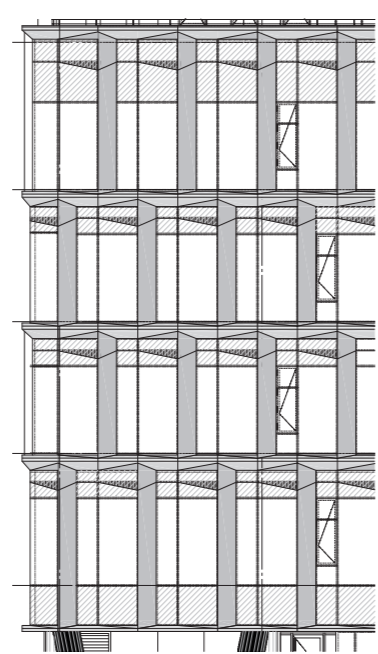
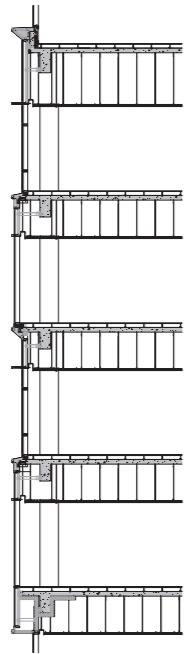
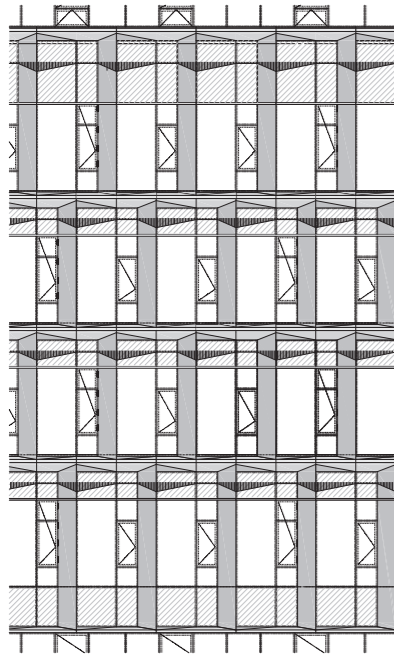
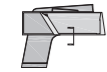
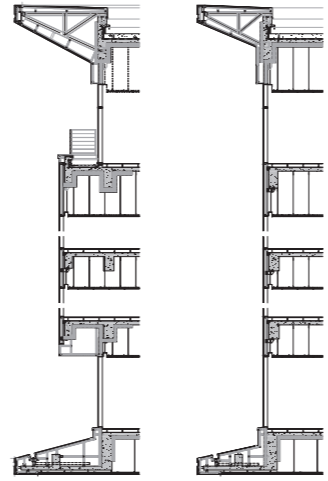
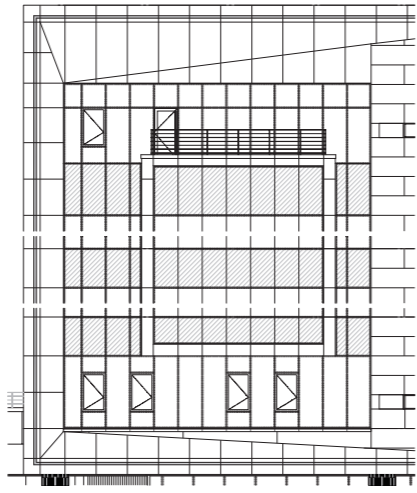
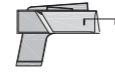
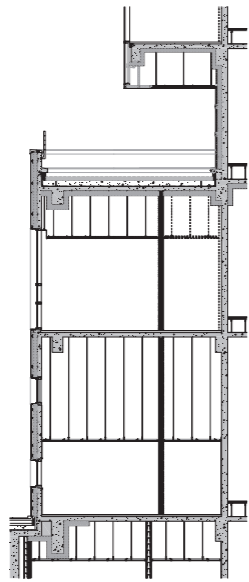
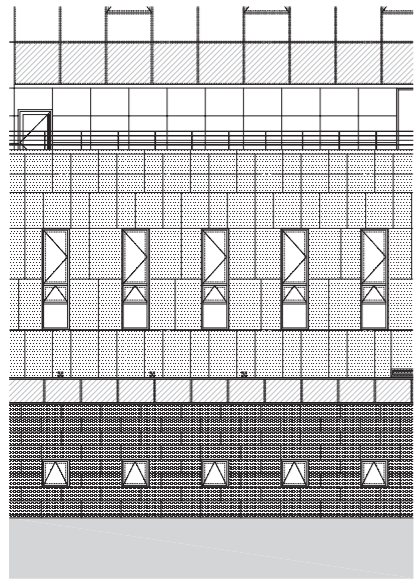
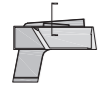
Basement first floor plan



First floor plan

0 10.20 40m





Exterior wall part enlarged elevation

