

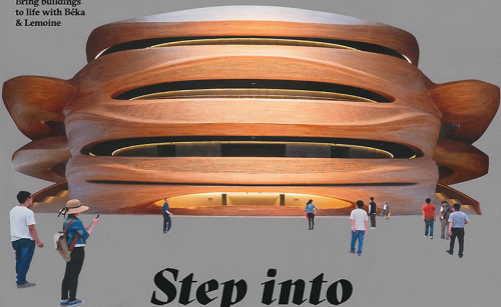
Another Architecture N°59 December 2015—January 2016

MARK

Follow in the
footsteps of
Martin Luther

Learn how to
build a house
from demolition
materials

Bring buildings
to life with Beka
& Lemoine



Step into the Madhouse

Nature meets culture in
Mad Architects' Harbin Theatre

EU 03545 024 04 82550
US \$19.95 (P) 03545 024 04 82550 W01



Plan

012 Notice Board

026 Cross Section

028 NAP / Hiroshi Nakamura Atami

030 2b Belmont-sur-Lausanne

032 Lederer Ragnarsdóttir Oei Ulm

034 CtrlG / 51-1 Medellín

036 Filip Dujardin Kortrijk

038 Diener & Diener Warsaw

040 Jorge Suso Padul

042 Elding Oscarson Tokyo

044 Infographic

046 Studio Prototype Schoorl

048 Espen Surnevik Våler

050 Robertneun Berlin

052 CF Møller Aarhus

054 Tomohiro Hata Kobe

056 Raumzeit Kassel

058 Office O Tremelo

060 Studio Archea Liling

062 Lorenzo Castro Medellín

064 Bloot Hengelo

066 Tham & Videgård Stockholm

068 Perspective

Martin Luther Memorials in Saxony-Anhalt

070 There are three towns in eastern Germany that call themselves *Lutherstadt* (Luther city). All three of them have constructed new museums or visitor centres.

068



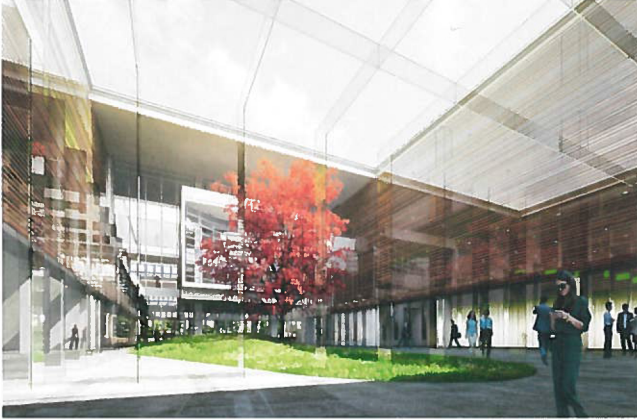
Springer Architekten
Martin Luther's Birth House
Visitor centre in Eisleben
Photo Bernd Hiepe

052



CF Møller Architects
Office building in Aarhus
Photo Adam Mark

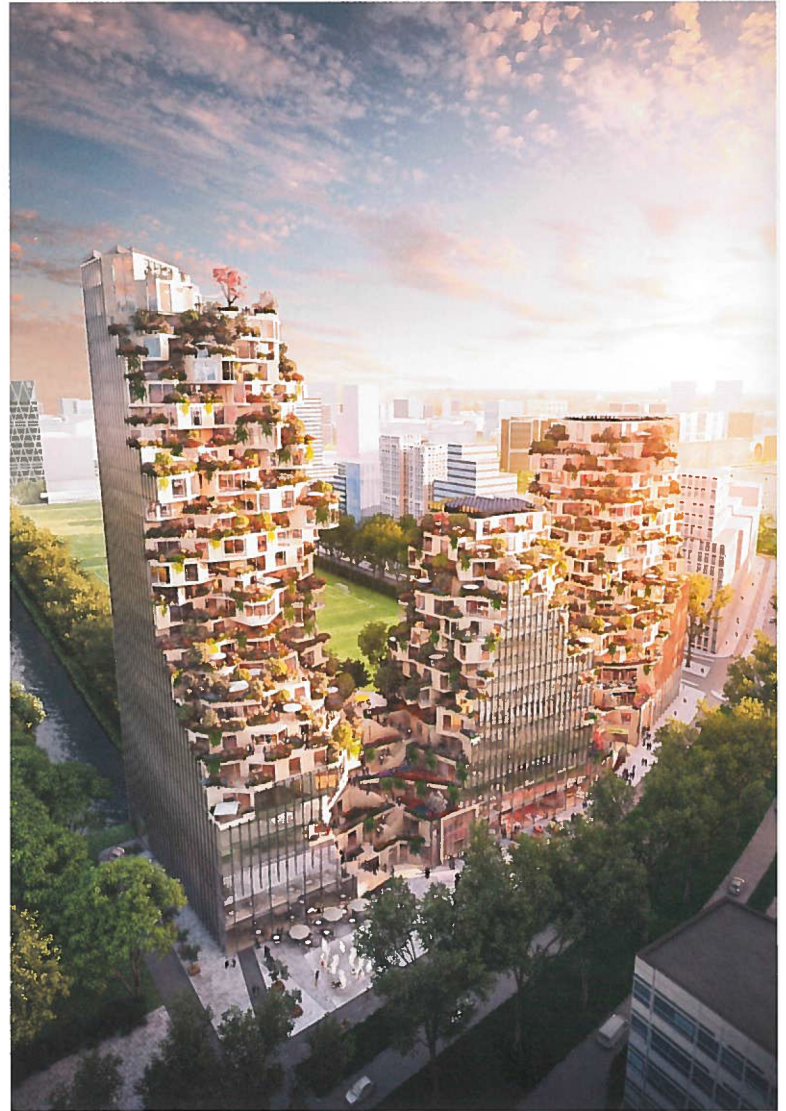
1



3



2



Rendering by A2 Studio

- 1 Smart Work Center and Press Center**
 Seoul–South Korea
 Haeahn Architecture and H Architecture
 — A 23,750-m² annex to the National Assembly, housing a press centre, a smart work centre for commuting officers and ministers, supplementary office space and auxiliary facilities
Competition entry, 1st prize, expected completion undisclosed
haeahn.com
h-architecture.com

- 2 Ravel Plaza**
 Amsterdam–Netherlands
 MVRDV
 — Offices, residences and amenities, covering a total floor area of between 50,000 m² and 75,000 m²
Competition entry, 1st prize, expected completion undisclosed
mvrdiv.com

- 3 70-73 Piccadilly**
 London–UK
 Adjaye Associates
 — A 36,546-m² complex for Crosstree Real Estate Partners, comprising retail, a hotel and apartments
Planning approved, expected completion undisclosed
adjaye.com