



239



문화체육관광부 선정
우수콘텐츠집지
2014

Small Building
Special RAUM Architects Group

Seoul Metropolitan Archives 서울기록원

Haeahn architecture / Kim Tae Man, Kim Sung Won + With architects & consultants / Kim Se Jong, Lee Byeong Gu

㈜해안종합건축사사무소 / 김태만, 김성원 + ㈜위드종합건축사사무소 / 김세중, 이병구

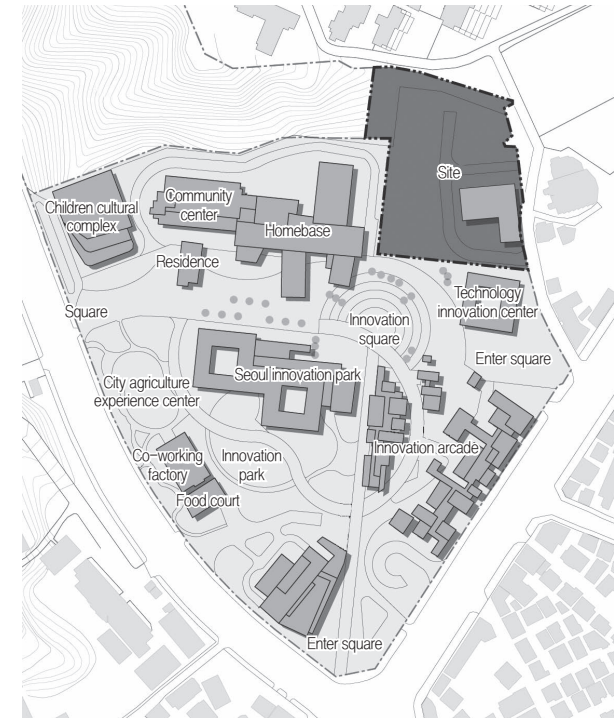
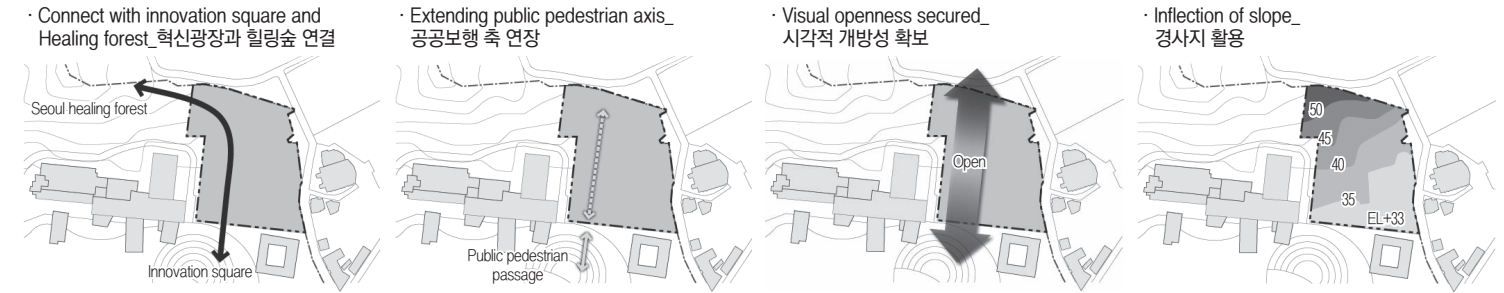
Building 'Seoul Metropolitan Archives' is like a record on the earth as Edward Carr once said, 'The history is an endless conversation with the present and the past.' Likewise, design should start from a place where people communicate and share with surrounding contexts. The Seoul Metropolitan Archives, a plan belonging to Innovative park, considers the characteristic of the land that requires an open view in public square and pedestrian transfer and connects the Innovative Square and Healing Forest harmoniously. As a part of a site, the Seoul Metropolitan Archives, the monumental 'Land of monument', communicates with Innovative Square behind, gives a way to Seoul Healing Forest in low position, and accumulates the lands of sharing stories of people.

서울기록원은 에드워드 카의 '역사는 현재와 과거의 끊임없는 대화다.'라는 이야기를 통해 기록원을 건축한다는 것이 대지에 새겨지는 하나의 기록이라면 주변맥락과 대화하고 사람들과 소통하고 공유하는 대화의 장으로서의 모습을 가져야 한다는 것에서 디자인이 시작된다. 혁신파크 내에 일부로 계획되는 서울기록원은 주변맥락과의 조화로운 스케일계획과 혁신광장과 힐링 숲을 이어주고 광장과 공공보행도로에서의 열린 경관을 필요로 하는 대지의 특성을 고려하여 터가 기록원을 구축하는 것이 아닌 그 자체가 터가 되는 기록원으로서 대지에 낮게 드리우고, 뒤로 물러나 대지 앞 혁신광장과 대화하고, 서울 힐링 숲으로 가는 길을 내어주며 사람들이 모여 이야기 나누는 장소를 만들어 가는 서울기록원다운 모습의 대지가 쌓여가는 기념비적 '기록의 터'인 Land monument를 계획하였다.

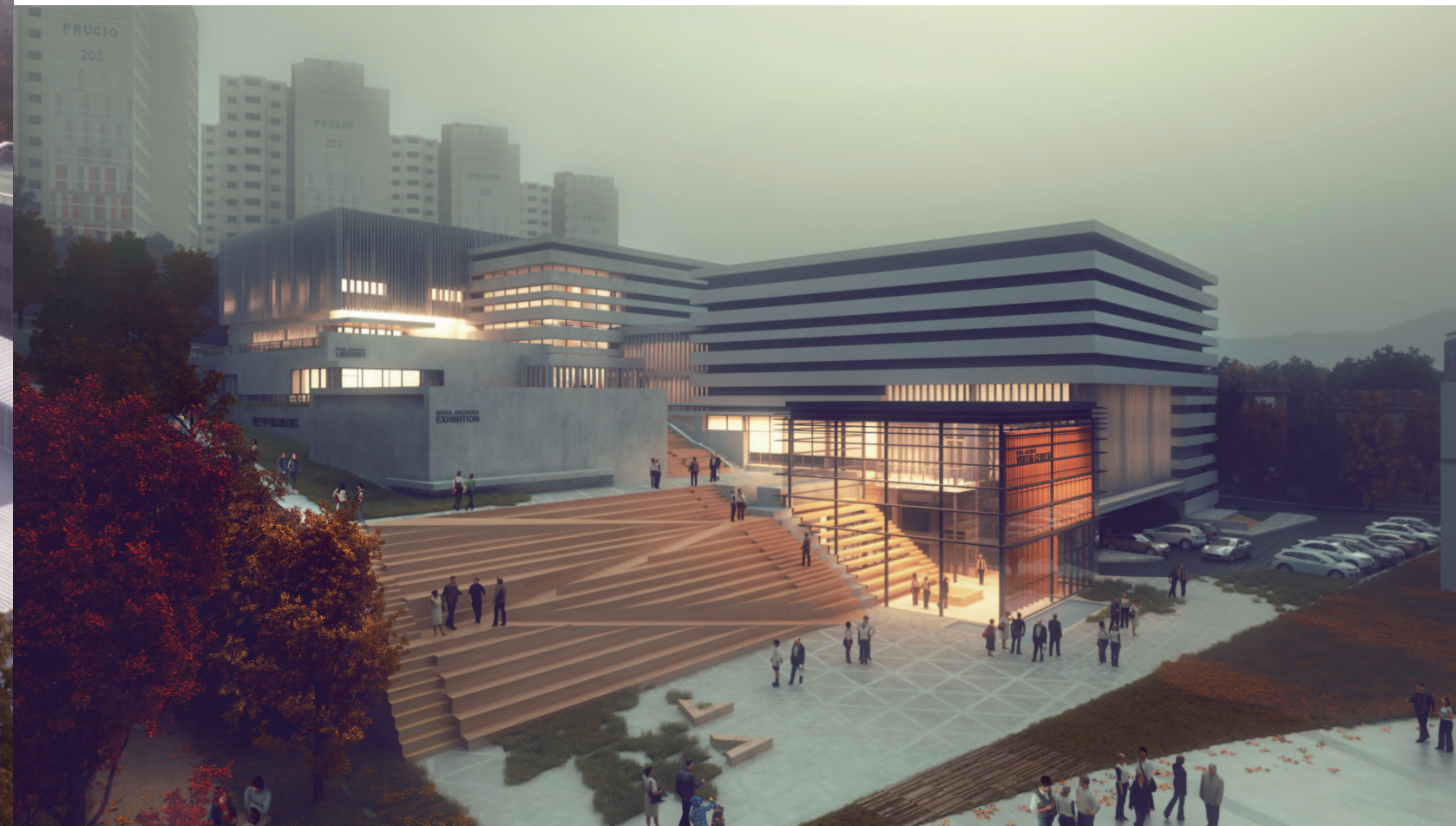
Location : Seoul, S.Korea | Function : Public & Business facility | Site area : 8,998㎡ | Bldg. area : 4,234㎡ | Total floor area : 15,921㎡ | Landscape area : 2,725㎡ | Stories : B2, 5FL
Finish : Ceramic panel, Triple pair glass, Stone

위치 : 서울시 은평구 통일로 684 | 용도 : 공공업무시설 | 설계담당 : 문현덕, 이지현, 심경아, 임지혁, 임성우, 배성은, 신상진, 민건호, 이형석, 김건영, 이형숙, 염문환, 한수정(해안) + 배준석(위드)
건축주 : 서울특별시 도시기반시설본부 | 조정설계 : 해안조경 | 구조설계 : (주)신화에스디지

Site Analysis

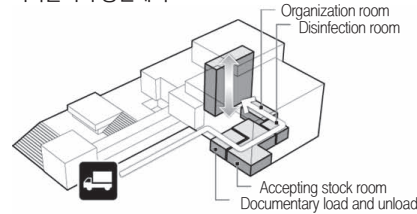


Site plan

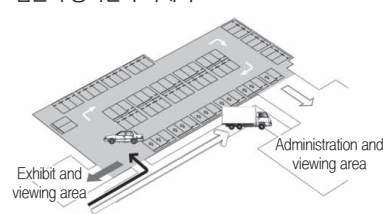


Plan

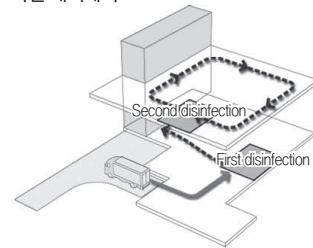
Records disposition circulation plan_ 기록물처리 동선계획



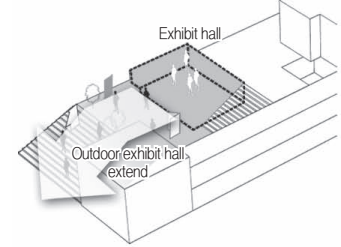
Parking plan with easy accessibility_ 접근이 용이한 주차계획



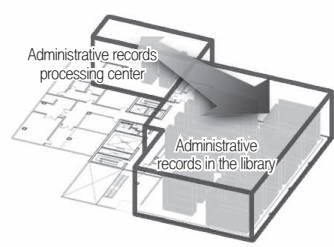
Disinfecting room arrangement plan_ 소독실 배치계획



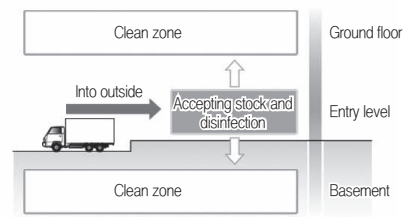
Exhibition space with communication between inside and outside_ 내외부 소통하는 전시공간



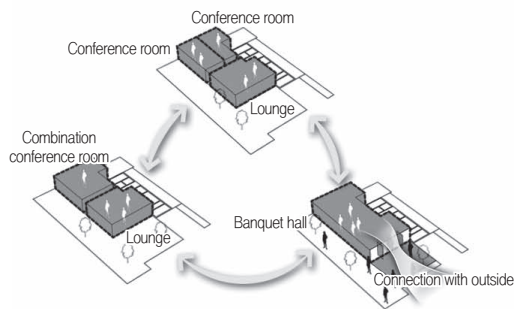
Plan to arrange Administrative records in the library_ 행정박물 서고 배치계획



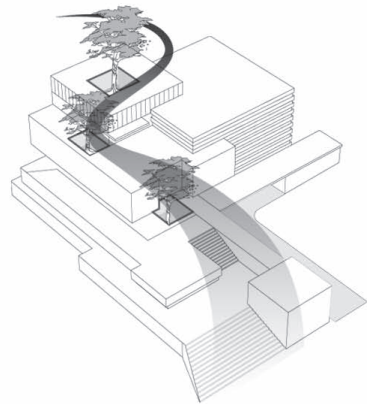
Clear zoning depending on zone classification_ 영역구분에 따른 명확한 조닝계획



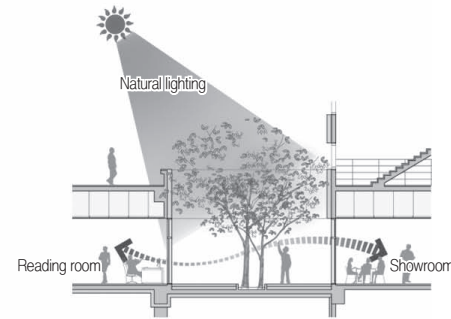
Variable business supporting facility_ 가변형 업무지원시설



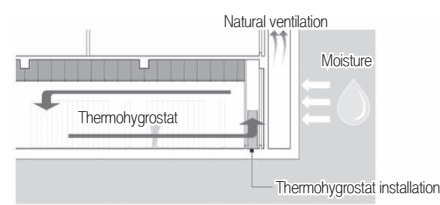
Inner court plan for indoor environment_ 실내환경을 위한 중정계획



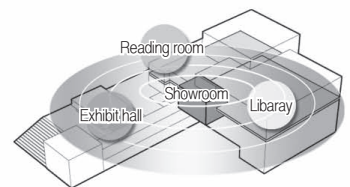
Sectional plan for skylight and ventilation_ 채광 및 환기를 위한 단면계획



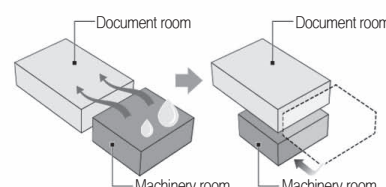
Optimal library environment_ 최적의 서고환경조성



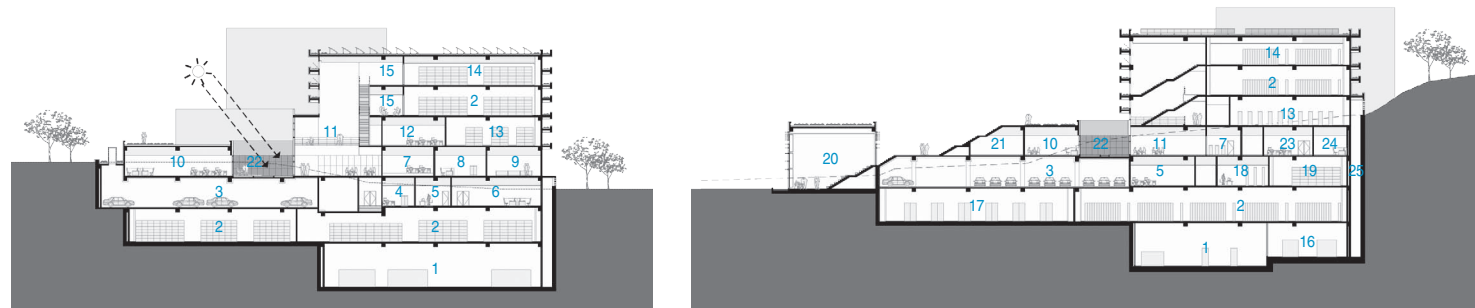
Book reading plan focused on display hall_ 관람홀 중심의 서고 열람계획



Separation of machine room and library_ 기계실과 서고 분리 설치



- 1. Machinery room
- 2. Library
- 3. Parking lot
- 4. Load and unload office
- 5. Prevention of disasters center
- 6. Accepting stock room
- 7. Restoration room
- 8. Disinfection & Fumigation room
- 9. Deoxidation room
- 10. Reading room
- 11. Watching room
- 12. Electromagnetic media room
- 13. Electronic archive stacks
- 14. Administration stacks
- 15. Tour space
- 16. Electrical room
- 17. History museum storage
- 18. Evaluation room
- 19. Private records stacks
- 20. Visitor center
- 21. Exhibit hall
- 22. Patio
- 23. Media conversion room
- 24. Preservation & Restoration room
- 25. DA

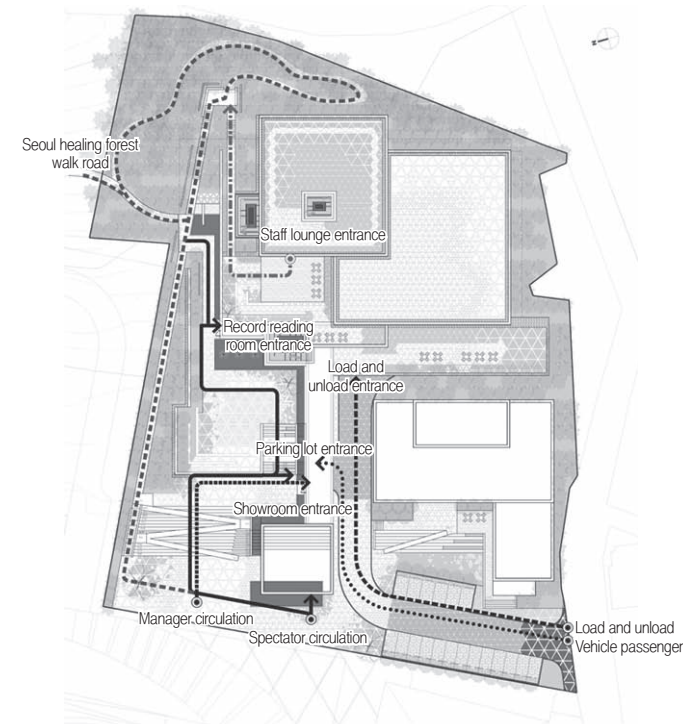


Cross section

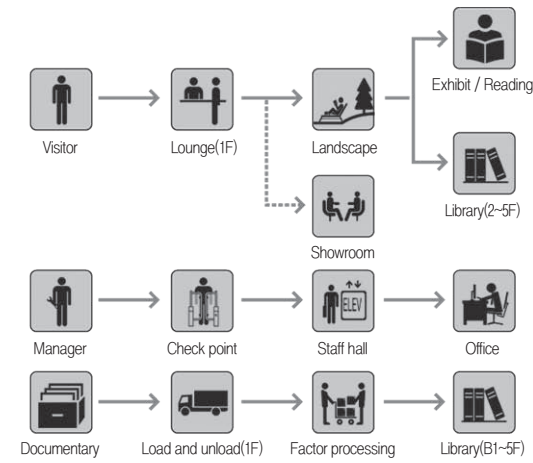
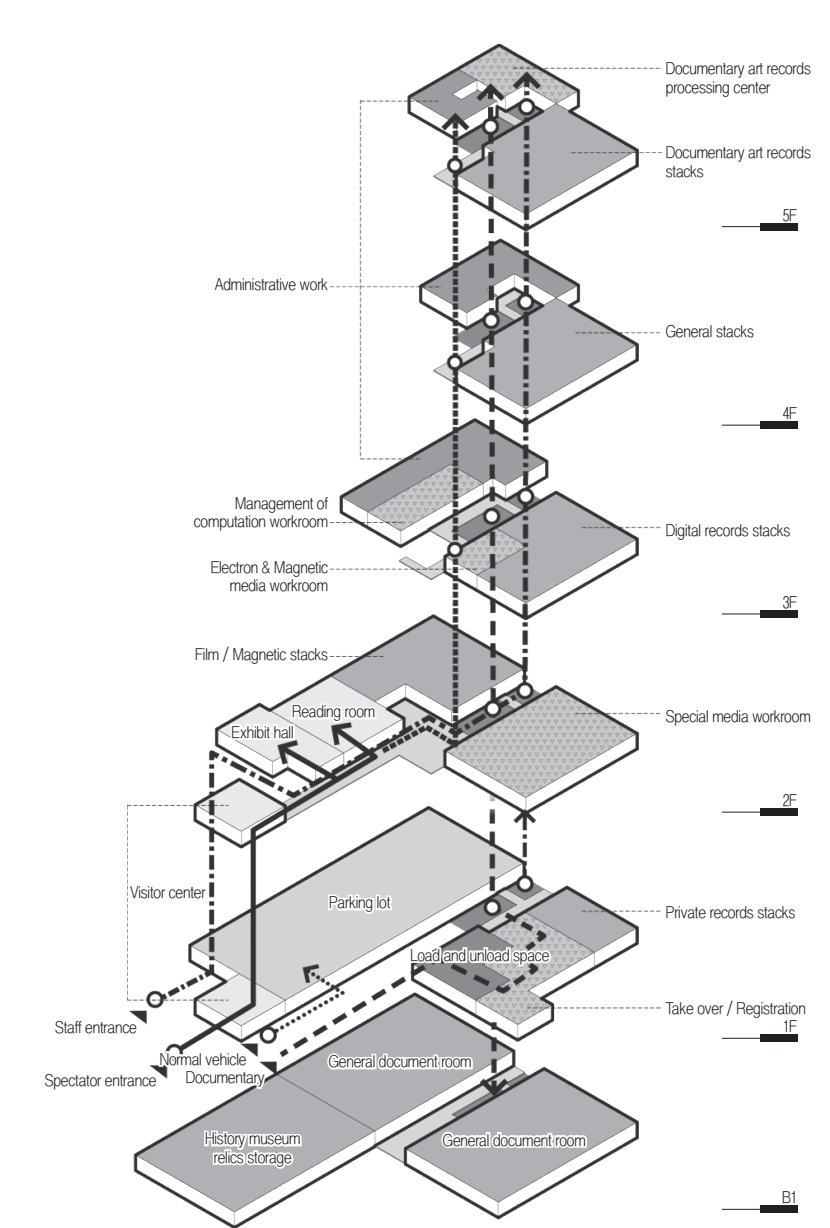
Longitudinal section

Circulation

Outdoor circulation_외부동선 계획

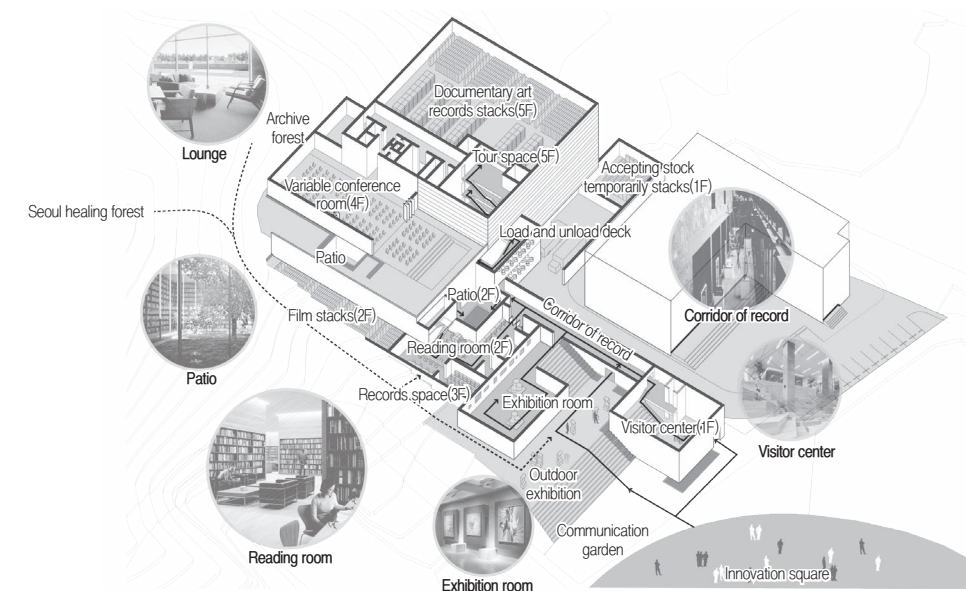


Indoor circulation_내부동선 계획



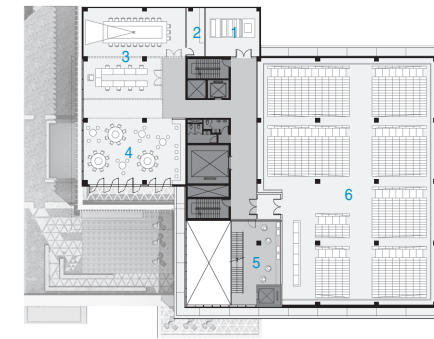
Exhibition Plan

Archives with circulation path on which visitors can see both inside and outside_ 내외부 공간이 모두 감상되며 유망하는 기록관





- 1. Dry room
- 2. Preparation room
- 3. Conference room
- 4. Staff lounge
- 5. Library tour space
- 6. Library
- 7. Administration museum tour space
- 8. Director's office
- 9. Secretary's office
- 10. Patio
- 11. Recording room
- 12. Data processing room
- 13. Temporarily stacks
- 14. Documentary art records processing center
- 15. Laundry room
- 16. Front room
- 17. Documentary art records stacks



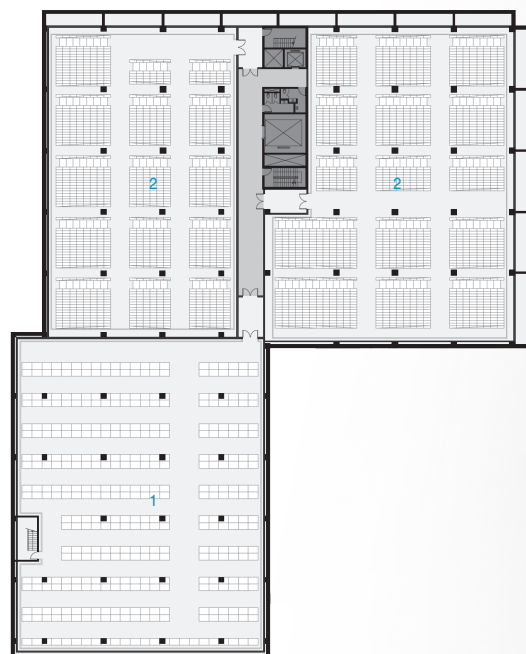
Fourth floor plan



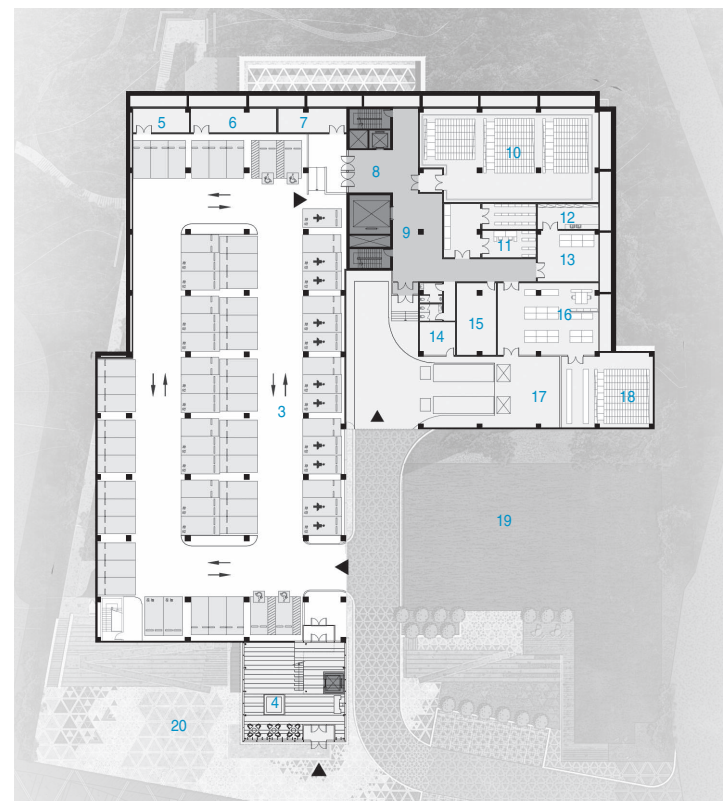
Fifth floor plan

- 1. History museum storage
- 2. Library
- 3. Parking lot
- 4. Visitor center
- 5. Fan room
- 6. Storage
- 7. Operating room
- 8. Staff hall
- 9. Load and unload hall
- 10. Private records stacks
- 11. Evaluation room
- 12. Medicine storage
- 13. Disinfection room
- 14. Load and unload office
- 15. Building safety center
- 16. Accepting stock room
- 17. Load and unload deck
- 18. Accepting stock room temporarily stacks
- 19. Life double cropping center
- 20. Communication garden

- 1. Hall
- 2. Front room
- 3. Magnetic media stacks
- 4. Film stacks
- 5. Magnetic media stacks tour space
- 6. Reading office
- 7. Reading library
- 8. Reading room
- 9. Patio
- 10. Audiovisual records & Micro film reading room
- 11. Exhibit hall
- 12. Audiovisual records processing center
- 13. MF office
- 14. Medicine storage
- 15. Backout processing room
- 16. Janitor's office
- 17. Restoration watching room
- 18. Disinfection & Fumigation room
- 19. Deoxidation disposal room
- 20. Deoxidation room
- 21. Data processing room
- 22. Temporarily stacks
- 23. Office
- 24. Tea making room
- 25. Dry room
- 26. Digital records stacks
- 27. Magnetic media workstation



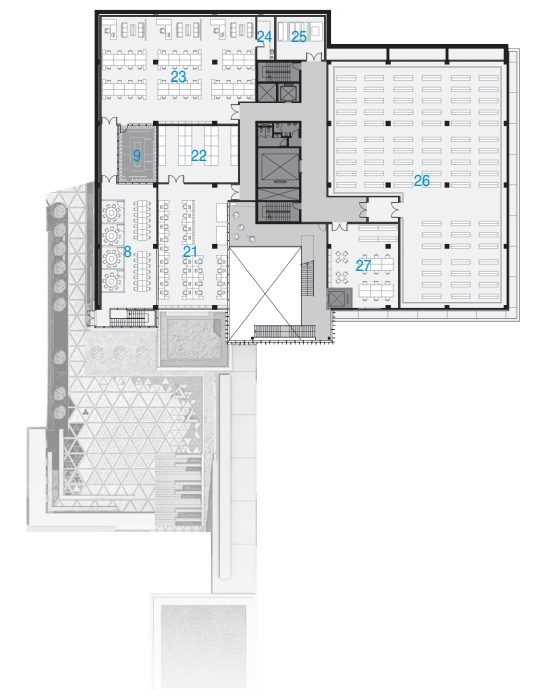
First basement floor plan



First floor plan



Second floor plan



Third floor plan